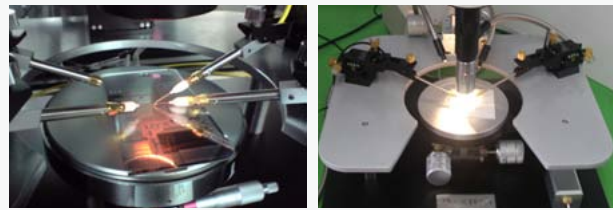


# MST 4000A

4" Probe Station



This model is the equipment that may generate measurement data of good quality at a reasonable cost with convenience in use.  
Leakage Current is ~100 fA, accompanied by Option for using Hot Chuck.

## Specification

Probe Station Main	Chuck : 4 Inch Low Noise Chuck , On Ceramic Pad Vacuum Chuck On/off Switch Chuck Ground, Back Gate X/y Stage : Travel 50x 50mm, Resolution : 5um Microscope : Travel 50 x 50mm, Fine Manual Fine Knob (X/y Stage )
Microscope & CCD Camera	Stereo : Magnification _90x CCD Zoom Camera : ~ 400x, More Than (Object Lens 5x, 10x, 20x ) CCD Camera : SD 40M Pixel or Full HD 210M Pixel (user choice )
Positioner	Positioner : PB50 X/y/z Travel : 6um Resolution : 3um Bottom base : Magnet Base
Positioner Holder	Holder : Triaxial C_15 or Coaxial C_14 Leakage current : Triaxial 1fA less than (C_15)
Probe Tip	M5BG, HR : 0.5 x 30mm Gold Tungsten or Tungsten M3BGHR : 0.5 x 30mm Gold Tungsten
Option	Dark Shield Box : Dimension 900(w) x 780(d) x 1,000(h) or Customize
	Vibration Table : Dimension 900(w) x 900(d) x 800(h)
	Hot Chuck : Temp 200, 300 Degree c (6" or Spot Hot Chuck )