

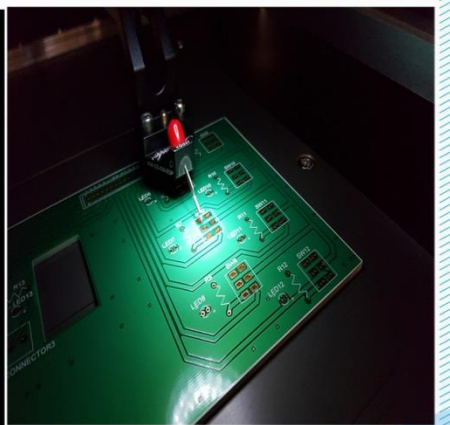
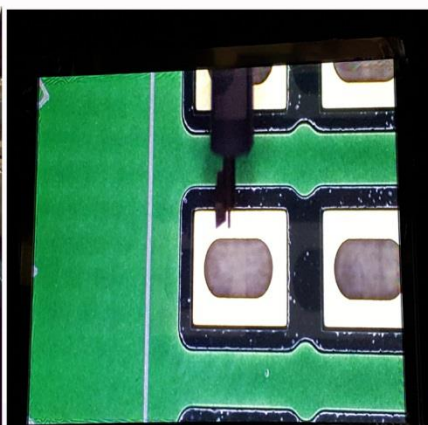
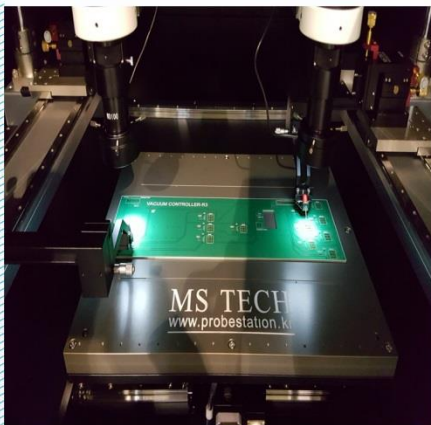
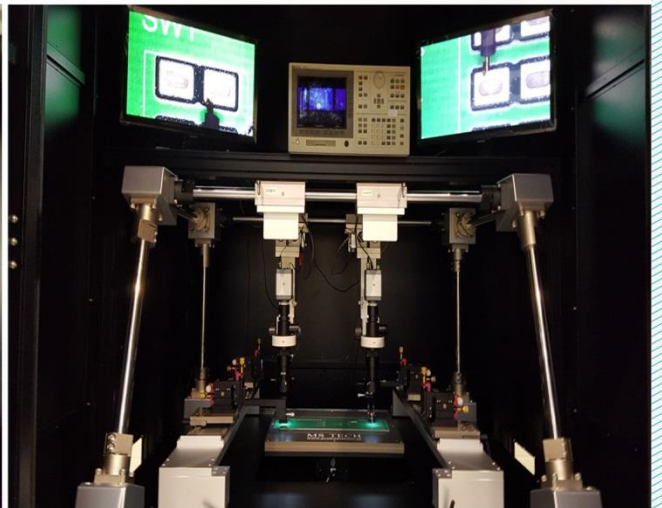
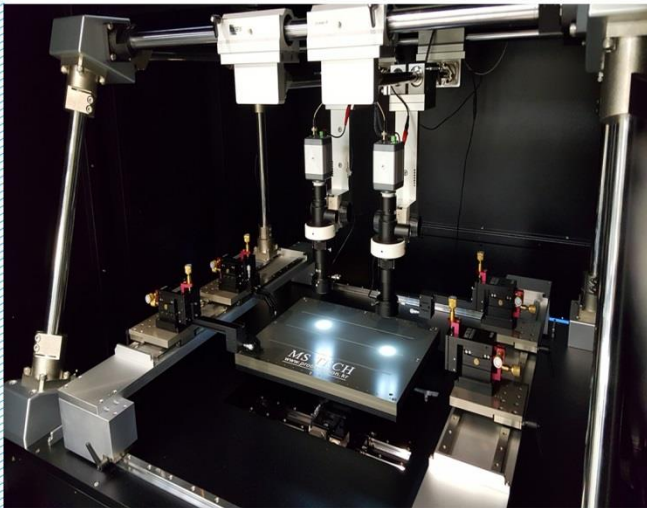
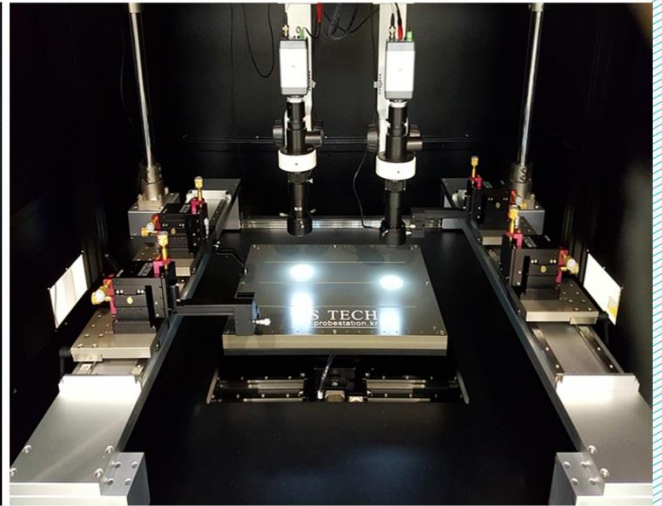
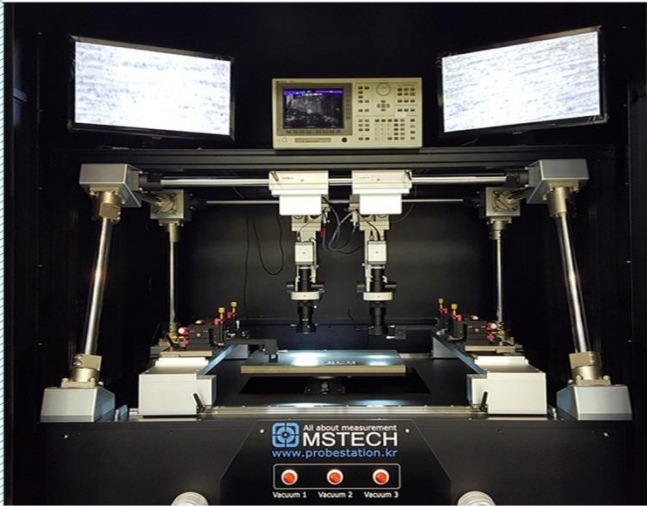
www.probestation.kr

PROBE STATION

BOARD PROBE STATION_M12BMA



BOARD PROBE STATION_M12BMA

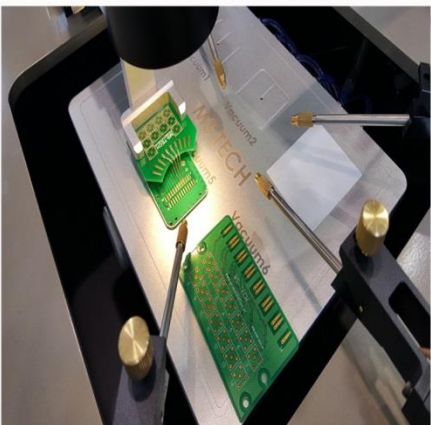
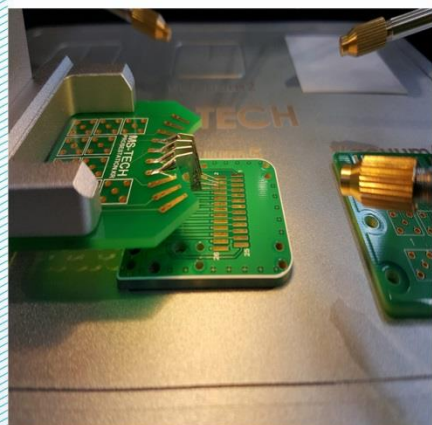
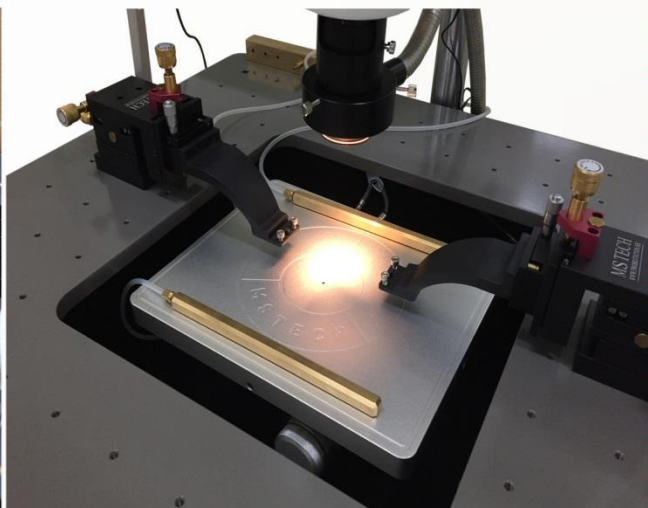
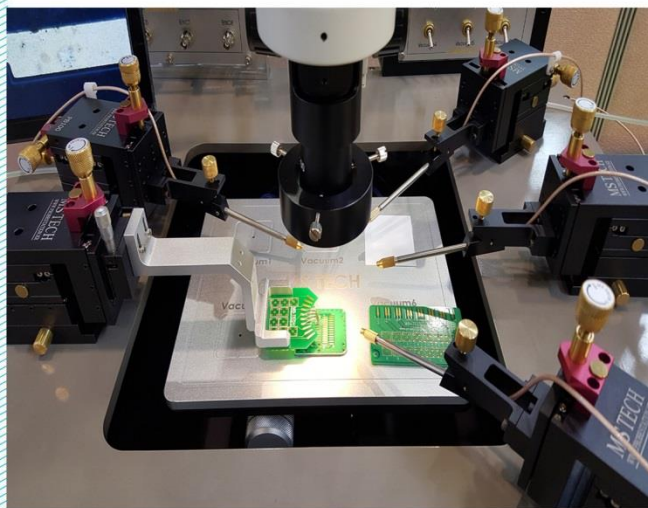
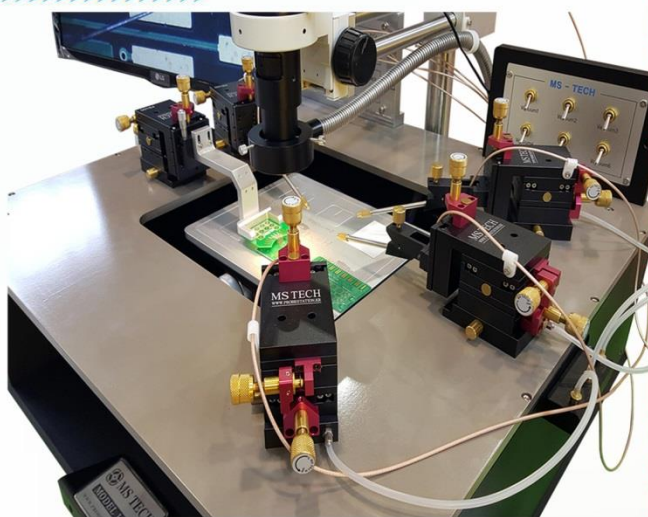
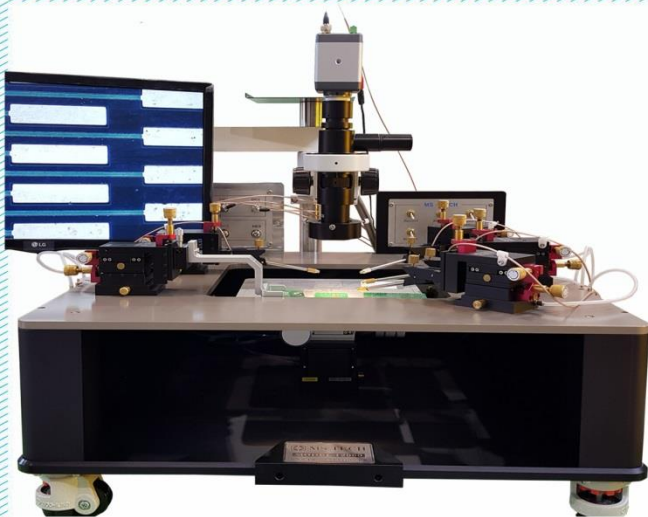


#187, Jeunggeri, Hyangam, Hwaseong-City, Gyeonggi-Do, KOREA

TEL +82 31 366 1678 FAX +82 31 366 1679

www.probestation.kr

BOARD PROBE STATION_M12BMA



#187, Jeunggeri, Hyangam, Hwaseong-City, Gyeonggi-Do, KOREA

TEL +82 31 366 1678 FAX +82 31 366 1679

www.probestation.kr

BOARD PROBE STATION_M12BMA



Specification

MODEL : M12BMA

IMPEDANCE, IV, CV, RF, DDR Measure

DC ~ RF 110 GHz

Sample Chuck : 100mm ~ 400mm

Resolution : 5um Fine knob,

Sample stage & Micro scope Long Working Motion

Dual & Single Microscope : ~ 800x Max

(CCD Zoom Camera, 22" LCD Monitor)

Positioner & Holder, 8 Positioner (4 Side Foot)

Option

Dark Shield Box

Vibration Table



#187, Jeunggeri, Hyangam, Hwaseong-City, Gyeonggi-Do, KOREA

TEL +82 31 366 1678 FAX +82 31 366 1679

www.probestation.kr