

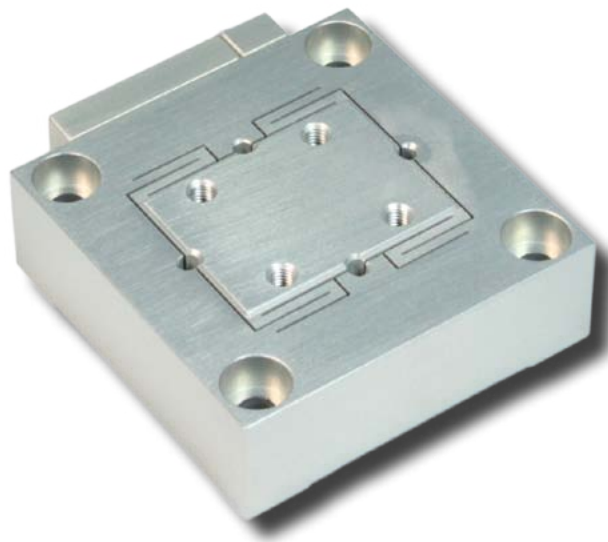
Nano-MET10 & Nano-MET20

Features

- ▶ Compact footprint
- ▶ Single axis - 10 microns or 20 microns
- ▶ Closed loop control
- ▶ Ultra-low noise performance
- ▶ Picometer positioning resolution
- ▶ High speed
- ▶ **pico** sensor technology

Typical Applications

- ▶ High speed, high resolution positioning
- ▶ Metrology
- ▶ AFM
- ▶ SPM



LabVIEW Compatible USB Interfaces



Examples, tutorial, and
Nano-Route[®] 3D supplied
with Nano-Drive[®] USB
interfaces.

Product Description

The Nano-MET10 and Nano-MET20 are compact, single axis nanopositioning systems with exceptional resonant frequency and low noise characteristics. The Nano-MET10 and Nano-MET20 have picometer positioning resolution. Internal position sensors utilizing proprietary PicoQ[®] technology provide absolute, repeatable position measurement under closed loop control.

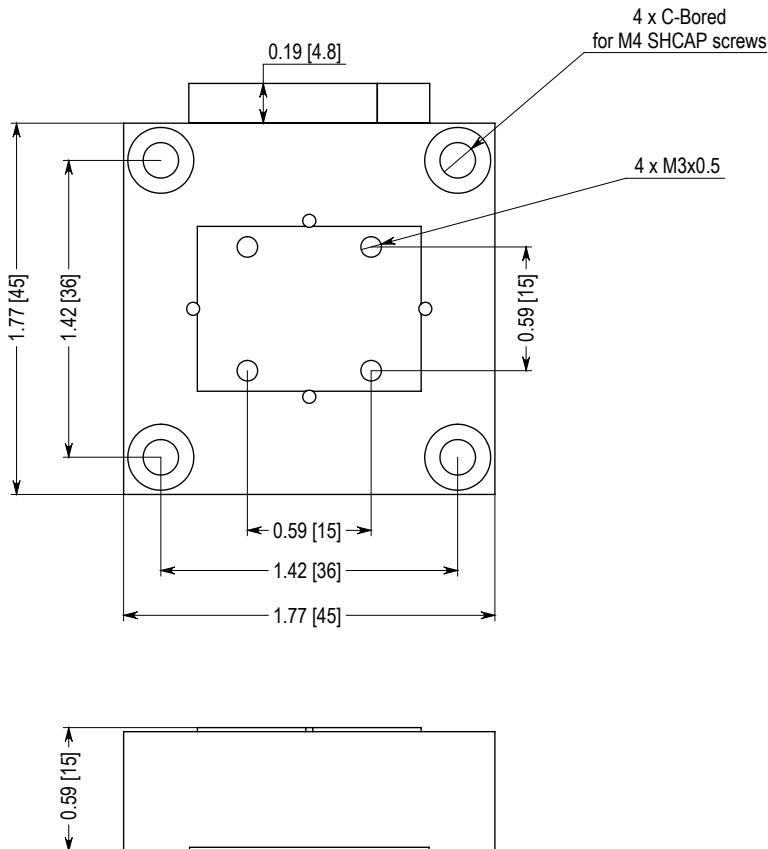
The low noise characteristics and high resonant frequencies make it ideal for demanding metrology applications that require noise floors less than 10 picometers and high speed performance.

Related products include the Nano-MET2, Nano-MET3 and Nano-METZ nanopositioning systems.

Technical Specifications

Range of motion (MET10)	10 μ m
Range of motion (MET20)	20 μ m
Resolution (Nano-MET10).....	0.01 nm
Resolution (Nano-MET20).....	0.02 nm
Resonant Frequency	4.6 kHz
Recommended max. load (horizontal)*	100 g
Recommended max. load (vertical)*	100 g
Body Material	Aluminum
Controller	Nano-Drive®

* Larger load requirements should be discussed with our engineering staff.



Note: Dimensions in Inches [mm]