

测量设备校准标准片及校准服务

Measuring Equipment Calibration Standard and Calibration Service

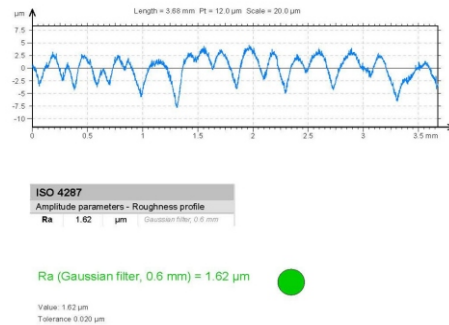
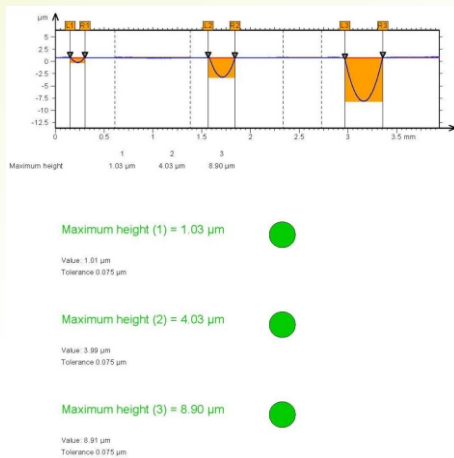
测量设备校准标准片

在产品品质控制中，质量管理体系（DIN ISO 9000至9004）在工业生产中起着决定性作用。在很多工业领域都需要进行表面粗糙度等测量，然而任何高精密的设备测量都会存在细小的偏差，定期的校准可以把这些偏差（如深度，波纹度，表面粗糙度等）控制在标准范围内，为了使测量设备对样品结构粗糙度或深度等参数测试的不确定因素降到最低，保持设备的高精度，必须使用国际认证的校准标准片进行计量校准，根据现行规定，校准标准片必须通过德国PTB或其他国际权威机构认证并附带认证证书。

巨纳集团为全球客户提供专业的校准标准片和校准计量服务，HALLE校准标准片符合多项国际标准规定，分别为ISO 4288, ISO 11562, ISO 13562-1, ISO 13562-2, ISO 5436, ISO 4287-1 (DIN 4768), ISO 13565-2 (DIN 4776), ISO 3274 (DIN 4772)等。

校准服务

校准服务典型客户有：西门子、宝马、大众、博世、双立人、吉列Gillette、TDK、英飞凌、巴斯夫、德固赛、中国科学院、德豪润达、赛维LDK、清华大学、上海交通大学等。



校准服务示例:
深度校准Depth Calibration

校准服务示例:
粗糙度校准Roughness Calibration

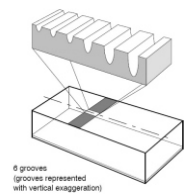
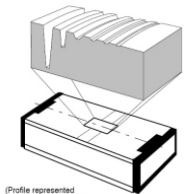
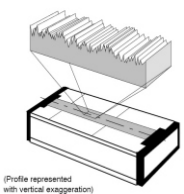
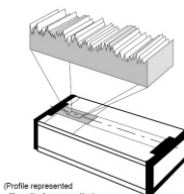
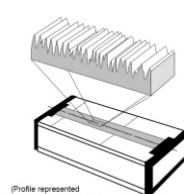
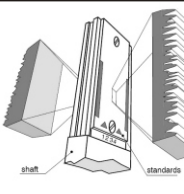
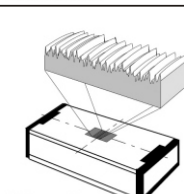


PTB深度校准标准片认证证书
PTB Depth Calibration
Standard Certification

PTB粗糙度校准标准片认证证书
PTB Roughness Calibration
Standard Certification

测量设备校准标准片及校准服务

Measuring Equipment Calibration
Standard and Calibration Service

Designation 名称	Design 产品描述	Line of product 产品型号	Picture 图片
Depth setting standards 深度计量校准块	with round base grooves (6 grooves, 3 grooves and 1 groove) 圆底凹槽 (1槽, 3槽和6槽可选)	KNT2060/01	 <small>6 grooves (grooves represented with vertical exaggeration)</small>
Depth setting standards 深度计量校准块	with planar grooves 平底槽	KNT 4080/03	 <small>(Profile represented with vertical exaggeration)</small>
Roughness measurement standards 粗糙度计量校准块	Standard 标准版	KNT 4058/01	 <small>(Profile represented with vertical exaggeration)</small>
Roughness measurement standards 粗糙度计量校准块	inexpensive version 低配版	KNT 4058/03	 <small>(Profile represented with vertical exaggeration)</small>
Roughness measurement standards 粗糙度计量校准块	for sheet metal surfaces 金属板表面	KNT 4058/02	 <small>(Profile represented with vertical exaggeration)</small>
Roughness measurement standards 粗糙度计量校准块	for sheet metal measuring stations (for 2+4 Two Button-Stylus) 双面金属板表面	KNT 2058/05	 <small>shaft standards (Profile represented with vertical exaggeration)</small>
Roughness measurement standards 粗糙度计量校准块	superfine roughness profile 超精细粗糙度轮廓	KNT 4070/03	 <small>(Profile represented with vertical exaggeration)</small>