

PEFA-LP-C SERIES (PEFA-EOLA)

PULSED ERBIUM FIBER AMPLIFIER

1.5 μm LONG PULSE FIBER AMPLIFIER



FEATURES

- Eye-safe 1545nm operating wavelength
- Energy per pulse up to 110μJ
- Peak power up to 360W
- Pulse duration from 200 to 400ns
- Pulse repetition frequency from 10kHz to 20kHz
- Polarization maintaining
- Fourier transform limited linewidth operation
- Diffraction limited or $M^2 < 1.5$
- Wide operating temperature range from -35°C to +65°C

Description

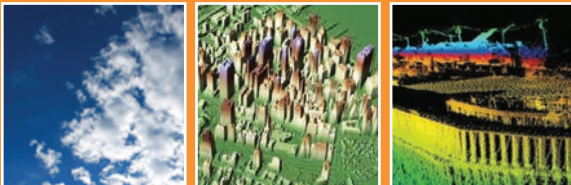
The PEFA-EOLA series are eye-safe polarization maintaining fiber amplifiers designed for long pulse operation.

The device delivers high energy per pulse up to 110μJ.

The output beam is diffraction-limited (output fiber with $M^2 < 1.5$ for energy above 15μJ).

This series is ideal for Doppler heterodyne LIDAR systems.

APPLICATIONS

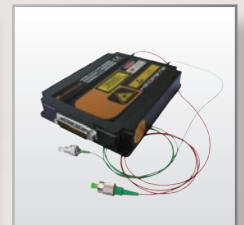


Aerosol detection / 2D/3D wind profiler
Weather monitoring / Pollution monitoring

PE 1D



PE 3D



3 Platforms

PE 2D



