

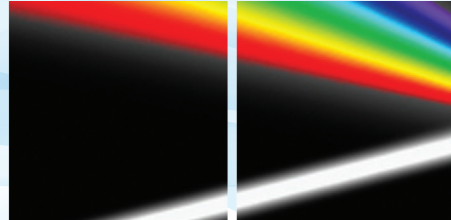


ScopeLite™ 200

Microscope Illuminator

ELEMENTAL ANALYSIS
FLUORESCENCE
GRATINGS & OEM SPECTROMETERS
OPTICAL COMPONENTS
FORENSICS
PARTICLE CHARACTERIZATION
RAMAN
SPECTROSCOPIC ELLIPSOMETRY
SPR IMAGING

ScopeLite™ 200 is a low cost metal halide illuminator that is always focused on your microscope



Much better than a traditional Hg lamp for fluorescence illumination.

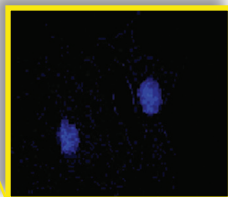
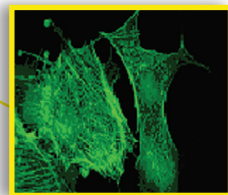
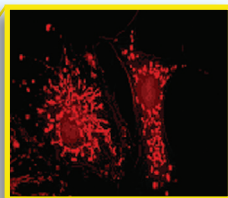
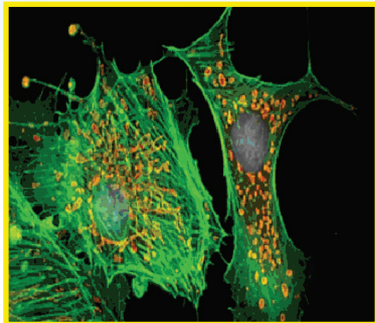
The ScopeLite™ 200 optimizes a pre-aligned, self-focusing 200 watt metal halide lamp. Combining the line output of a mercury lamp spectrum with the versatility of a broadband lamp, the ScopeLite's 200 watt metal halide lamp is ideal for a multitude of applications ranging from epifluorescence microscopy to cosmetic dentistry.

Features and Benefits

- Pre-aligned and always aligned
- Snap-in lamp replacement
- Quick release liquid light guide and lamp
- Illumination power adjustment standard
- Ultra stable bulb output (DC operation)
- TTL-operated mechanical shutter
- Intensity control
- Choice of microscope adaptors

Applications

- Epifluorescence microscopy
- Biotechnology: microArray
- Industrial: UV curing
- Machine vision
- Cosmetic dentistry
- Absorption microscopy: photodynamic therapy
- Medical: endoscope, light source
- Entertainment: projection
- And many more...



Ideal for RGB Imaging!



Specifications

Output power	7 watts (out of light guide)
Short term stability (typical)	Better than 0.06% RMS
Long term drift	<0.1% RMS
Lamp life	2000 hours typical
Liquid light guide	3 mm x 2 meter liquid light guide (300 - 700 nm)
Power supply	AC universal input switch mode 85–260 V, 50 or 60 Hz converted to DC output to lamp
Igniter	Mounted internally on the power supply
Cooling	Air-cooled by internal fan
Illumination adjustment	5 preset apertures, 25%, 50%, 75%, 100% and complete block
Control panel	On/Off Switch, Shutter and Start Buttons, TTL input
Certification	CE, UL & CSA
Warranty	One year excluding lamp and LLG
Dimensions	261 x 145 x 200 mm

Available Microscope Adaptors

Leica®	DMIRB: LLG direct (no epi-port) DMIRB: LLG to epi-port
Motic®	AE20/21/30/31/2000: LLG direct (no epi-port)
Nikon®	Diaphot 200/300: LLG direct (no epi-port) Diaphot TMD: LLG direct (no epi-port) Diaphot TMD: LLG to epi-port Eclipse: LLG to epi-port TE-2000: LLG direct (no epi-port) TE-2000: LLG to epi-port Ti-U: LLG direct (no epi-port)\ Eclipse, TE-2000, Ti-U, Ni-U: LLG to epi-port bayonet TS-100: LLG direct (no epi-port) TS-100: LLG to epi-port
Olympus®	CK-40/AX: LLG to epi-port IMT-2: LLG direct (no epi-port) IMX-70/BX-50: LLG direct (no epi-port) IMX-71/BX-51: LLG to epi-port
Zeiss®	Axio Observer A1: LLG direct (no epi-port) Axioscope (older pre epi-port): LLG direct (no epi-port) Axioscope 2FS: LLG direct (no epi-port) Axiovert 135: LLG direct (no epi-port) Axiovert/Axioscope: LLG to epi-port



OPTICAL BUILDING BLOCKS



HORIBA
Scientific

contact@OBB1.com

USA: +1 732 494 8660
UK: +44 (0)20 8204 8142
China: +86 (0)21 6289 6060

France: +33 (0)1 69 74 72 00
Italy: +39 2 5760 3050
Brazil: +55 (0)11 5545 1500

www.obbcorp.com

Germany: +49 (0)89 4623 17-0
Japan: +81 (0)3 6206 4721
Other: +1 732 494 8660