

XD7600NT Ruby

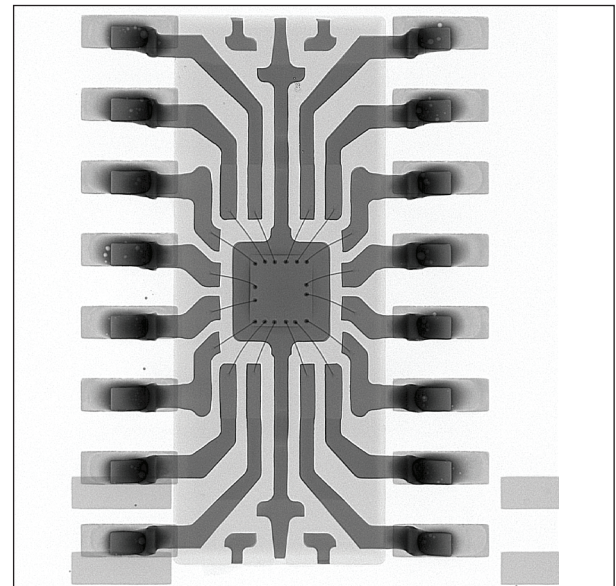
X-ray Inspection System

The Benchmark for Demanding Production Applications

Advantages

- Nordson DAGE NT500 Maintenance-Free, Sealed-Transmissive X-ray Tube
- Proveable < 0.5 μm Feature Recognition
- 160 kV Tube with Up to 10 W Target Power - Always Retains Sub-Micron Ability
- Nordson DAGE 2 Mpixel @ 25fps χ iDAT3 Digital Image Intensifier with Real Time Image Enhancements
- Geometric Magnification 1,800 X, System 7,800 X and Total 23,400 X with Digital Zoom
- 29" x 22.8" (736 x 580 mm) Maximum Board Size
- 70° Oblique Views without Loss of Magnification
- 24" TFT LCD Monitor
- AXiS - Active X-ray Image Stabilisation
- No Programming Skills Required for Automated Inspection Tasks
- Options: μ CT (3D Inspection); X-Plane™ & Secondary Monitor

Nordson DAGE, the only x-ray company whose focus is on x-ray electronics inspection, offers the Nordson DAGE XD7600NT Ruby x-ray inspection system as the benchmark system for the most demanding production applications. The unique Nordson DAGE NT maintenance-free, sealed-transmissive x-ray tube, providing 0.5 μm feature recognition and up to 10 W of target power, together with the 2 Mpixel χ iDAT3 digital image intensifier makes this jewel of a system cover all the failure analysis and manufacturing tasks required in the production environment. The vertical system configuration, with



the x-ray tube sitting below the isocentric 'move and tilt' of the detector, controlled through simple, joystick-free, 'point and click' operation, provides the safe, collision-free and high magnification inspection required for production applications. All these tasks can be simply and quickly automated from within the Nordson DAGE Image Wizard software without the need for programming skills. Optional upgrades include μ CT and a secondary monitor.

Crystal Clear X-ray Inspection. Nordson DAGE.

XD7600NT Ruby X-ray Inspection System

Specifications

- Nordson DAGE NT500 sealed-transmissive, filament-free x-ray tube:
 - < 0.5 µm feature recognition 30 - 160 kV for < 4 W target power
 - < 0.95 µm feature recognition when above 4 W target power
 - 10 W max. target power above 110 kV
 - automated tube stabilisation
 - 2 years tube warranty
- 1,800 X geometric magnification (7,800 X system magnification)
- 23,400 X total magnification including digital zoom
- Easy, collision-free, high magnification inspection:
 - even at oblique angle views
 - joystick-free, 'point and click' operation
- Maximum board size: 29" x 22.8" (736 x 580 mm) with reduced magnification
- Maximum inspection area: 20" x 17.5" (508 x 444 mm)
- 70° oblique angle views:
 - for 360° around a point of interest
 - isocentric manipulator configuration keeps features in field of view
- XiDAT3 digital image intensifier detector with 1600 x 1200 pixels (2.0 Mpixels):
 - 25 fps full-frame 'real time' image acquisition
 - real time image enhancements
- 16-bit digital image processing
- AXiS - Active X-ray Image Stabilisation - anti-vibration control
- 24" TFT LCD operator display monitor
- Nordson DAGE Image Wizard operating software including:
 - automated and manual component fault analysis including BGA & QFN
 - simple to create and use robust automated inspection routines
 - plated through hole (PTH) fill percentage calculation
 - accurate measurement functions
 - automated and manual die attach / area void calculation
 - patented¹ X-ray navigation map for easy fault location
 - simple to use, no complicated joysticks required
- Fully lead-shielded system safety cabinet
 - providing < 1 µSv/hr x-ray leakage
 - meets all international standards
- 1 year system warranty

Options

- µCT choices with system order or as a retro-fit
- X-Plane™ 2
- 24" Secondary monitor for extra software functions and extended desktop
- Joystick control (X,Y or X,Y & Z)
- Barcode reader

System

- Size: 57" x 67" x 77.5" (w x d x h)
- Size: 1450 x 1700 x 1970 mm (w x d x h)
- System Weight: 1950 kg (4300 lbs)
- Maximum Sample Weight: 5 kg (11 lbs)
- Power: Single Phase 200 - 230Vac, 16A
- Max.Power Consumption: 1000 W Max.
- Air: 4 - 6 bar clean, dry for anti-vibration
- Operating Temp. Range: 10 - 30°C
- Humidity: < 85% (non-condensing)

For more information, please contact your Nordson DAGE regional office or speak with your local Nordson DAGE representative, all of whom are listed on www.nordsondage.com

Americas

+1 510 683 3930 Phone
sales@nordsondage.com Email

China

+86 512 6665 2008 Phone
sales.ch@nordsondage.com Email

Germany

+49 7021 950690 Phone
sales.de@nordsondage.com Email

Japan

+81 3 3599 5920 Phone
sales.jp@nordsondage.com Email

South East Asia

+65 6796 9500 Phone
sales.sg@nordsondage.com Email

Taiwan

+886 2 2902 1860 Phone
globalsales@nordsondage.com Email

United Kingdom

+44 1296 317800 Phone
globalsales@nordsondage.com Email

