

# XD7600NT Diamond FP

X-ray Inspection System

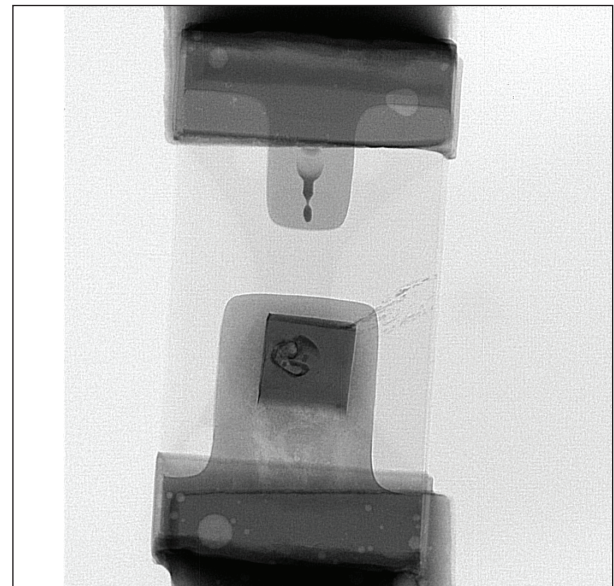
## Ultimate Flat Panel X-ray Inspection System



### Advantages

- Nordson DAGE NT100 Maintenance-Free, Sealed-Transmissive X-ray Tube
- < 0.1µm (100nm) Feature Recognition Tube
- 160 kV Tube with Up to 10 W Target Power - Always Retains Sub-Micron Ability
- Nordson DAGE 3 Mpixel @ 25fps Long Lifetime CMOS Flat Panel Detector Including Real Time Image Enhancements
- Geometric Magnification 2,500 X, System 7,100 X and Total 35,500 X with Digital Zoom
- 29" x 22.8" (736 x 580 mm) Maximum Board Size
- 70° Oblique Views Without Loss of Magnification
- AXiS - Active X-ray Image Stabilisation and 24" Primary and Secondary TFT LCD Monitors
- Highest Quality Real Time Imaging and Extended System and Tube Warranty as Standard
- Option: µCT (3D Inspection)

Nordson DAGE, the only x-ray company whose focus is on x-ray electronics inspection, offers the Nordson DAGE XD7600NT Diamond FP x-ray inspection system that uses the latest technology, flat panel detector to provide the ultimate choice for the highest quality real time x-ray imaging. The unique Nordson DAGE NT maintenance-free, sealed transmissive x-ray tube, providing 0.1 µm feature recognition and up to 10 W of target power, together with the 3 Mpixel long lifetime CMOS flat panel detector makes this jewel of a system the choice for the highest performance and highest magnification real-time imaging.



Damaged wire in PCB mounted LED

The vertical system configuration, with the x-ray tube sitting below the isocentric 'move and tilt' of the detector, all controlled through the simple, joystick-free, 'point and click' operation of the Nordson DAGE Image Wizard Software provides the safe and collision-free inspection required for all applications. All these tasks can be simply and quickly automated from within the standard Nordson DAGE software without the need for programming skills. Optional upgrades include µCT.

**Crystal Clear X-ray Inspection. Nordson DAGE.**

# XD7600NT Diamond FP X-ray Inspection System

## Specifications

- Nordson DAGE NT100 sealed-transmissive, filament-free x-ray tube:
  - < 0.10  $\mu\text{m}$  feature recognition 30 - 160 kV for < 4 W target power
  - < 0.95  $\mu\text{m}$  feature recognition when above 4 W target power
  - 10 W maximum target power above 110 kV
  - automated tube stabilisation
  - 2 years tube warranty
- 2,500 X geometric magnification (7,100 X system magnification)
- 35,500 X total magnification including digital zoom
- Easy, collision-free, high magnification inspection:
  - enable at oblique angle views
  - joystick-free, 'point and click' operation
- Maximum board size: 29" x 22.8" (736 x 580 mm) with reduced magnification
- Maximum inspection area: 20" x 17.5" (508 x 444 mm)
- 70° oblique angle views:
  - for 360° around a point of interest
  - isocentric manipulator configuration keeps features in field of view
- Long Lifetime CMOS digital detector with 1940 x 1530 pixels (3 Mpixels)
  - 25 fps full-frame 'real time' image acquisition
  - real time image enhancements
- 16-bit digital image processing
- AXiS - Active X-ray Image Stabilisation - anti-vibration control
- Two 24" TFT LCD operator display monitors
- Nordson DAGE Image Wizard operating software including:
  - automated and manual component fault analysis including BGA & QF
  - simple to create and use robust automated inspection routines
  - plated through hole (PTH) fill percentage calculation
  - accurate measurement functions
  - automated and manual die attach / area void calculation
  - patented x-ray navigation map for easy fault location
  - simple to use, no complicated joysticks required
- Fully lead-shielded system safety cabinet:
  - providing < 1  $\mu\text{Sv/hr}$  x-ray leakage
  - meets all international standards
- 1 years system warranty

## Options

- $\mu\text{CT}$  choices with system order or as a retro-fit
- X-Plane™ 2
- 30" TFT LCD Monitors
- Joystick control (X,Y or X, Y & Z)
- Barcode reader

## System

- Size: 57" x 67" x 77.5" (w x d x h)
- Size: 1450 x 1700 x 1970 mm (w x d x h)
- System Weight: 1950 kg (4300 lbs)
- Maximum Sample Weight: 5 kg (11 lbs)
- Power: Single Phase 200 - 230Vac, 16A
- Max.Power Consumption: 1000 W Max.
- Air: 4 - 6 bar clean, dry for anti-vibration
- Operating Temp. Range: 10 - 30°C
- Humidity: < 85% (non-condensing)

For more information, please contact your Nordson DAGE regional office or speak with your local Nordson DAGE representative, all of whom are listed on [www.nordsondage.com](http://www.nordsondage.com)

### Americas

+1 510 683 3930 **Phone**  
[sales@nordsondage.com](mailto:sales@nordsondage.com) **Email**

### China

+86 512 6665 2008 **Phone**  
[sales.ch@nordsondage.com](mailto:sales.ch@nordsondage.com) **Email**

### Germany

+49 7021 950690 **Phone**  
[sales.de@nordsondage.com](mailto:sales.de@nordsondage.com) **Email**

### Japan

+81 3 3599 5920 **Phone**  
[sales.jp@nordsondage.com](mailto:sales.jp@nordsondage.com) **Email**

### South East Asia

+65 6796 9500 **Phone**  
[sales.sg@nordsondage.com](mailto:sales.sg@nordsondage.com) **Email**

### Taiwan

+886 2 2902 1860 **Phone**  
[globalsales@nordsondage.com](mailto:globalsales@nordsondage.com) **Email**

### United Kingdom

+44 1296 317800 **Phone**  
[globalsales@nordsondage.com](mailto:globalsales@nordsondage.com) **Email**

