

## Overview

### The first fully integrated supercontinuum white light laser-powered lifetime steady-state fluorometers.

The Fluorolog Extreme seamlessly combines our fluorometers with the high intensity and broad wavelength range of the supercontinuum lasers made by NKT Photonics.

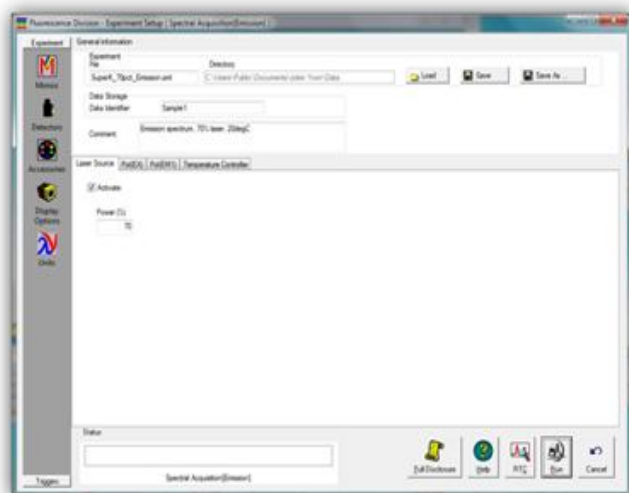
What is a supercontinuum laser, also known as a white light laser? It is a very bright source that, unlike other lasers, simultaneously puts out light at a very wide spectral range from just above 400 nm to over 2  $\mu\text{m}$ . Because of their brightness and broad spectral range, they make excellent sources for steady-state measurements. Furthermore, since the duration of the laser pulses is in the 10s of picoseconds range, these lasers can also be used as lifetime sources.

### WHY GO EXTREME ?

- Steady-State: More excitation power for weak fluorescence signals, especially in the NIR.
- It's LIKE having A 1000W Xenon Lamp!

### Features

- Select any excitation wavelength from the visible to over 2 microns
- Complete optical, mechanical and software integration:
  - Kinematic adapter to mount excitation monochromator instead of xenon lamp
  - Control of laser power and wavelength directly from FluorEssence Software. Also, all laser parameters are storable in and recallable from XML method files, reports.

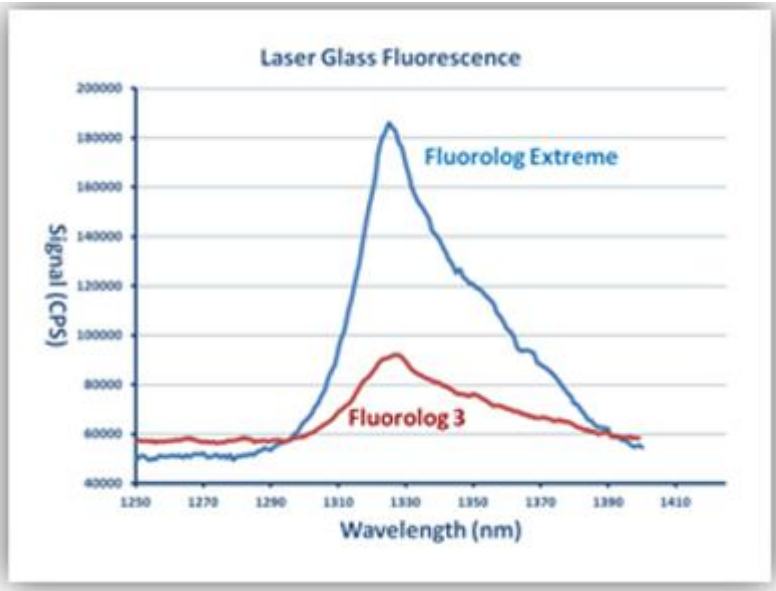


[Click here to find more about Superk Extreme High Power Supercontinuum Lasers made by NKT Photonics.](#)

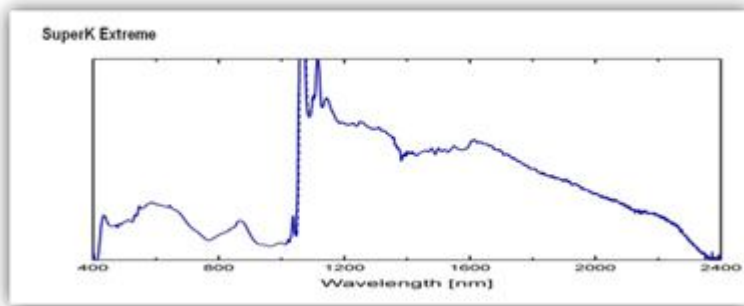
## Specifications

The world's most sensitive fluorometer is made even more sensitive!

- More excitation power, especially in the NIR, means more signal:



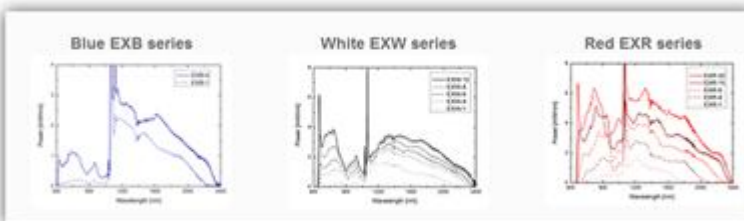
- More excitation power, especially in the NIR



A Fluorolog/FluoroCube Extreme is comprised

- Choice of any NKT SuperK Extreme model:

Blue EXB series	White EXW series	Red EXR series	Vis power	Total Power
EXB-1	EXW-1	EXR-1	100 mW	~ 1 W
EXB-4	EXW-4	EXR-4	400 mW	~ 2.4 W
-	EXW-6	-	600 mW	~ 3 W
-	EXW-12	-	1200 mW	~ 4.5 W
-	-	EXR-15	1500 mW	~ 6 W
-	-	EXR-20	2000 mW	~ 8 W



PLUS:

- Any Fluorolog 3 (including existing units). Includes kinematic adapter to replace xenon lamp on entrance of excitation monochromator.

