



## >> Spot Prep II :

The **highest capacity**, the **highest versatility**, the **smallest footprint**

A **new design** and **new user interface** for **rapid method transposition** leading to **fast, reliable** and **convenient HPLC purification**

Safe storage : up to 5 bottles of 2.5 litres in 2 stainless steel trays.

Armen 2 heads pump technology. 50 mL/min, 250 mL/min or 500 mL/min pump heads.

Panel PC 10,4" with touch screen and new AGP software.

Dual-wavelength UV-Vis 200-600 nm spectrophotometer.

All HPLC columns from 4 mm to 100 mm.

Built-in electric injection valve.

Variable dynamic mixing chamber.

Built-in second acquisition channel for ELSD, RI, or any other detectors...

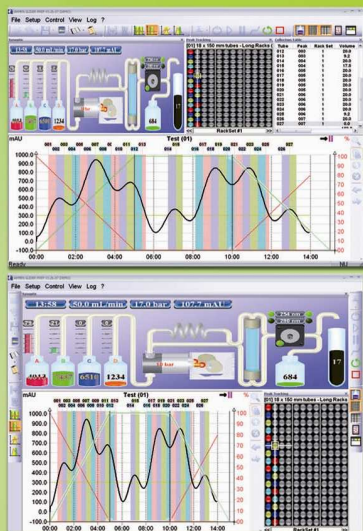
2 for 4 independent solvent inlets for real binary or quaternary gradient. Precision and linearity of gradient and flow rate demonstrated by OQ.

Unequalled fraction collector capacity and unlimited number of collection cycles.

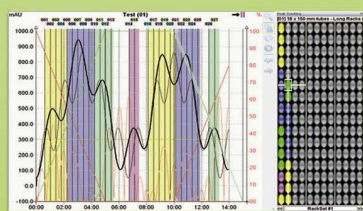


Based on 15 years experience supplying instruments for preparative chromatography applications, Armen Instrument has added yet more innovation to this product range along with its intuitive AGP software.

**PURIFICATION**

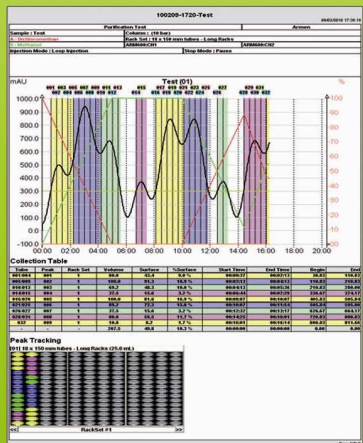


Method creation wizard.  
Equilibration, injection  
and purification process  
management.



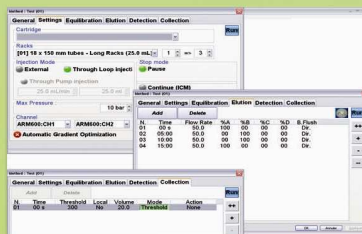
Direct access to all  
parameters on flow chart  
while purification is running.

Real Time gradient curves  
modifications :  
click-and-drag feature.



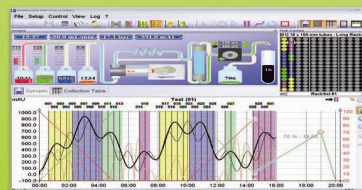
**PROCESS**

Customization of the  
User Interface and  
"User Profile" editor.



Integration of 2 simultaneous  
signals to recognize peaks  
of interest and collect only  
what is needed.

Real Time colour display  
matching peak with tubes  
and tray correlation.



Report editor : Customize and  
Print out or Export purification  
report.

**LINE**

Free off-line software for  
reprocessing can be installed  
on all users' PCs.  
No software license policy :  
Create systems local network  
or client server architecture.

The combination of **Spot Prep II** and **AGP** software creates the **most advanced HPLC purification tool** efficient for all types of applications. By using the very well-known AP technology, **Spot Prep II** offers **outstanding performance and efficiency** for **process development** as well as **pure molecule purification** from grams to ten of grams.

# And many other **unique Software Features ...**

For more flexibility, automation and safety in separation optimization with :



**A.G.O : Automatic Gradient Optimization**  
Programmed gradient turns automatically to isocratic step when a peak is recognized.



Automatic pausing when solvent/waste level, overpressure, leakage or tubes availability alarm is detected.



**I.C.M : Intelligent Continuous Mode**  
Identified peaks are collected after the end of the programmed run time.



Automatic flow rate optimization if overpressure is detected whilst the purification is running.

## ... and **high-end Hardware Options**



Controlled backflush valve and/or column switching valve.



Retrofit kits to change the model of pump (50 to 250 mL/min and 250 to 50 mL/min).

Additional column holder kit for connection of heavier columns.



Electronic sensors for Solvent and Waste level detection.



Fraction collector cover for systems to be installed outside of a fume hood (includes fan and chimney for vapor extraction).

Laser bar code reader for automatic identification of cartridges, solvents and racks.

## Spot Prep II specifications:

<b>Display and data entry</b>	Panel PC with digital 10,4" touch screen On screen Qwerty or Azerty Keyboard
<b>Solvent delivery system</b>	AP 2 heads pump - Binary gradient (or Quaternary gradient optional)
<b>Flow rate</b>	1 to 50 mL/min +/-2% - 5 to 250 mL/min +/-2% - 10 to 500 mL/min +/-2%
<b>Maximum pressure</b>	300 bar with 50 mL/min heads - 230 bar with 250 mL/min heads - 110 bar with 500 mL/min heads
<b>Gradient</b>	Isocratic, Linear, Auto-Step, Predefined On screen gradient adjustment
<b>Sample injection</b>	Built-in automatic injection valve Through external pump (optional)
<b>Detection</b>	UV-Vis dual WL spectrophotometer 200-600 nm (or 200-840 nm optional) Built-in second acquisition channel for ELSD, RI,... High pressure flow cell, continuous flow, adjustable path length
<b>Usable cartridges size</b>	From 4 mm to 100 mm
<b>FC triggers</b>	UV-Vis Signals. Analog inlet for other detector (RI, ELSD,...) Signals, Threshold, Local minimum, Time, Volume
<b>FC trays</b>	3 racks 18 mm tubes, 192 tubes (standard) All other racks size available
<b>Power</b>	110-240 VAC; 50-60 Hz
<b>Dimensions</b>	620 W x 660 H x 590 D (mm)
<b>Weight</b>	65 kg

Your local distributor :

**Manufacturer :**

Z.I. de Kermelin 16 rue Ampère

F - 56890 St-Avé (FRANCE)

**Tel. :** + 33 2 97 61 84 00

**Fax :** + 33 2 97 61 85 00

**E-mail :** contact@armen-instrument.com

**Site :** www.armen-instrument.com