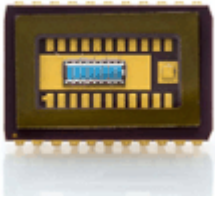


NewOpto Technology Corporation

APD 阵列



新势力光电供应 APD 阵列，包括线性 APD 阵列和矩阵 APD 阵列。该系列 APD 雪崩二极管阵列主要用于：激光雷达、激光测距。我们同时供应 APD 雪崩二极管和 APD 雪崩二极管模块。

Chip	Package	Description
8AA0.4-9	SOJ22GL	APD Array 8 Elements, QE>80% at 760-910nm with NTC
16AA0.13-9	SOJ22GL	APD Array 16 Elements, QE>80% at 760-910nm with NTC
16AA0.13-9	DIL18	APD Array 16 Elements, QE>80% at 760-910nm
16AA0.4-9	SOJ22GL	APD Array 16 Elements, QE>80% at 760-910nm
25AA0.04-9	BGA	APD Array 25 (5x5) elements, QE>80% at 760-910nm with PTC
25AA0.16-9	BGA	APD Array 25 (5x5) elements, QE>80% at 760-910nm with PTC
64AA0.04-9	BGA	APD Array 64 (8x8) elements, QE>80% at 760-910nm with PTC
QA4000-9	T08Si	Quadrant Avalanche Photodiode, QE>80% at 760-910nm

www.NewOpto.com

NewOpto Technology Corporation

7F, Building D, Cambridge Community, No.789 Shenhua Road, Hangzhou, China 310030
 Tel: +86-571-8515.2711 Fax: +86-571-8515.2722 Email: Sales@NewOpto.com