

# SpeedCycler<sup>2</sup>

- rapidPCR in less than 8 minutes
- Optimized for low reagent consumption
- Portable user-interface available



# SpeedCycler<sup>2</sup> | Ultra high performance thermal cycler

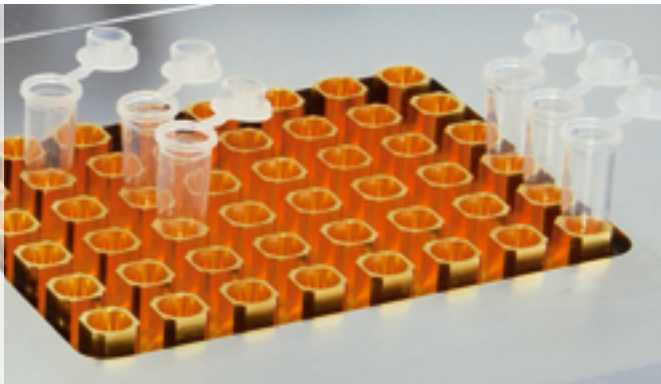
## Ultra high performance thermal cycler

With the new SpeedCycler<sup>2</sup> Analytik Jena has launched the second generation of the original SpeedCycler technology. The brand-new device is once more faster compared to its predecessor. Extraordinary high heating and cooling rates of up to 15 °C/sec and 10 °C/sec, respectively, are realized. That makes the SpeedCycler<sup>2</sup> to the fastest available thermal cycler worldwide.

- rapidPCR in less than 8 minutes
- rapidPCR with heating and cooling rates of up to 15 °C/sec and 10 °C/sec
- Rapid heat transfer into the sample through Self Adapting System

A smaller footprint, the modular design, the external control panel and, last but not least, the ultra high performance distinguishes the SpeedCycler<sup>2</sup> from his larger brother AlphaSC. The system is ideal either as space saving single thermal cycler or as a modular system expandable to full cycler networks. It grows with the requirements of its user. Starting with just a basis unit, which can be controlled via PC or the new external user-interface HID-Pro 320, the cycler can be expanded with additional basis units to build up complete cycler networks.

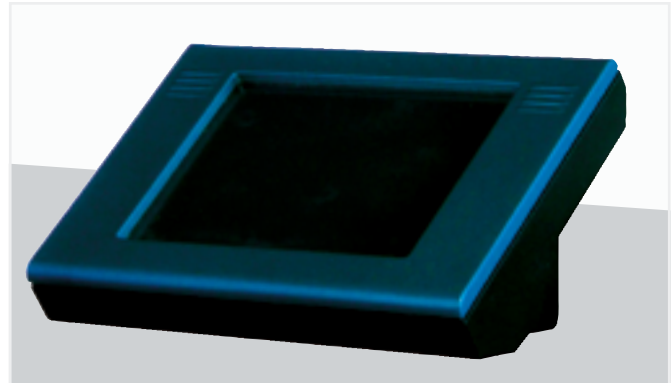
- Portable user-interface HID-Pro 320
- Small footprint satellite system, expendable to cycler networks



For the SpeedCycler<sup>2</sup> various, interchangeable blocks are available. Both, Standard-Profile-Rapid (SPR) blocks as well as the Low-Profile-Rapid (LPR) blocks are applicable to the SpeedCycler<sup>2</sup>. Therefore standard PCR consumables can be used as well as the low-profile PCR consumables.

- Four different blocks available (SPR: 24 SPR Block, 48 SPR Block | LPR: 36 LPR Block, 96 LPR Block)
- Reduced primer mismatching
- Solid-gold coated, sterling-silver sample block
- Optimized for low reagent consumption and reduced running costs

The SpeedCycler<sup>2</sup> has been optimized for very small sample consumption and the use of inexpensive standard PCR reagents. Costly and often limiting chemical additives can be consciously avoided and are not necessary to perform a rapidPCR amplification. Furthermore, the higher cooling rate results in a significantly improved specificity of the PCR products compared to standard thermal cyclers.



- Portable and versatile user-interface HID-Pro 320 with 5.7" touch screen

## External user-interface HID-Pro 320

The new portable user-interface HID-Pro 320 makes a PC superfluous and operations exceptionally easy. Through its extra large 5.7" touch screen no keyboard or mouse is required for operation. Exchange of programs to other cyclers or export of data of executed PCR runs are not limited through an USB and LAN port.

- Windows CE based software
- USB and LAN port for easiest data change
- Multilingual Software